

Пользователь / Username	puhra
Дата / Date	20.04.2021 01:25:25
Имя файла / Filename	Размер 36 окружность груди 84 см, талия 66 см, бедра 90 см
Формат / Format	A4
Кол-во листов / Pages	23



ВАЖНО

При печати этого PDF файла «Масштабирование страницы» или «Page scaling» должно быть равно «Нет» или «No»

Печать производите в «Истинный размер» или «Actual size»

Подробнее смотрите в разделе «Помощь» - «Печать PDF файлов»

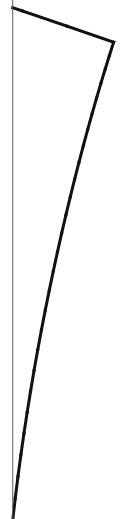
1:1

БЕСПЛАТНЫЕ ВЫКРОЙКИ MIRPIAR.COM

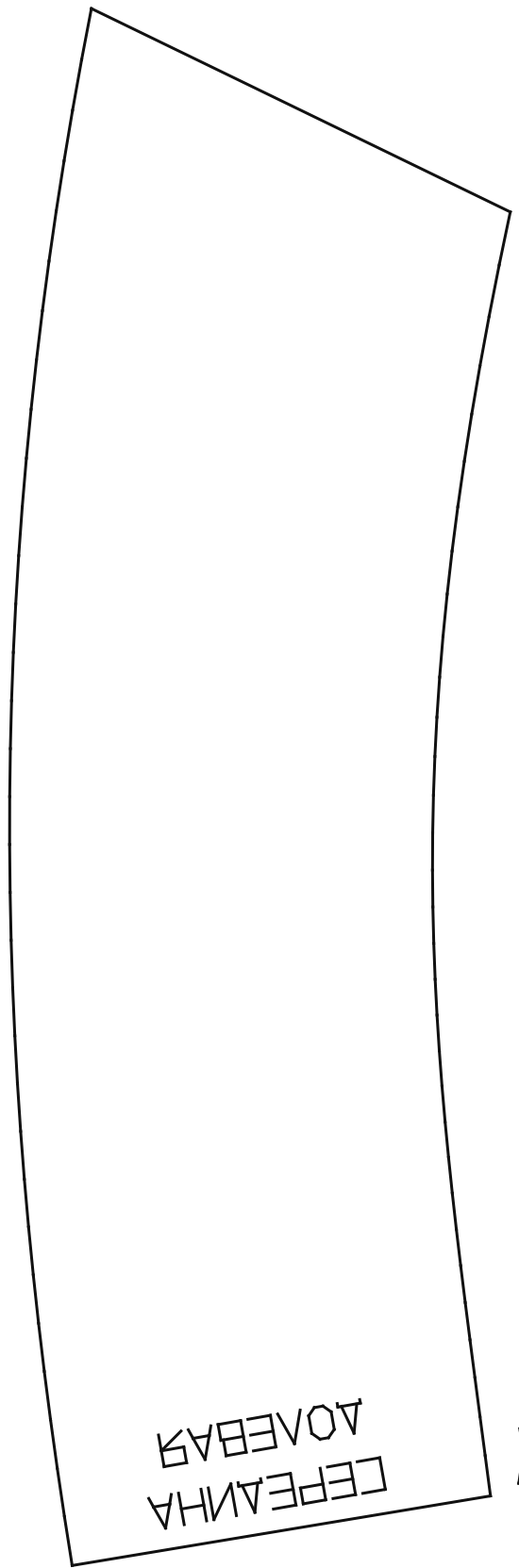
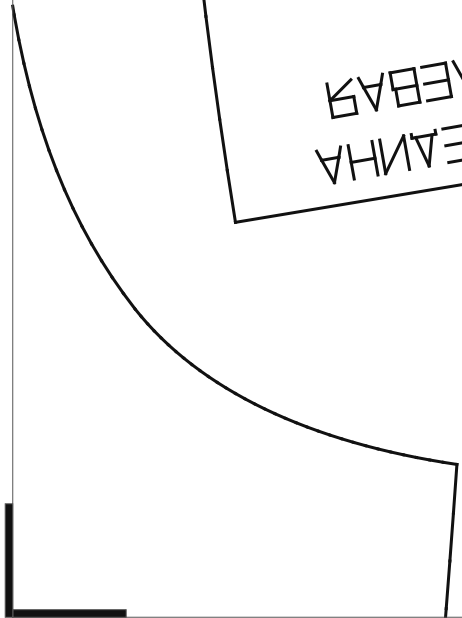
2:1
↓

1:2
→

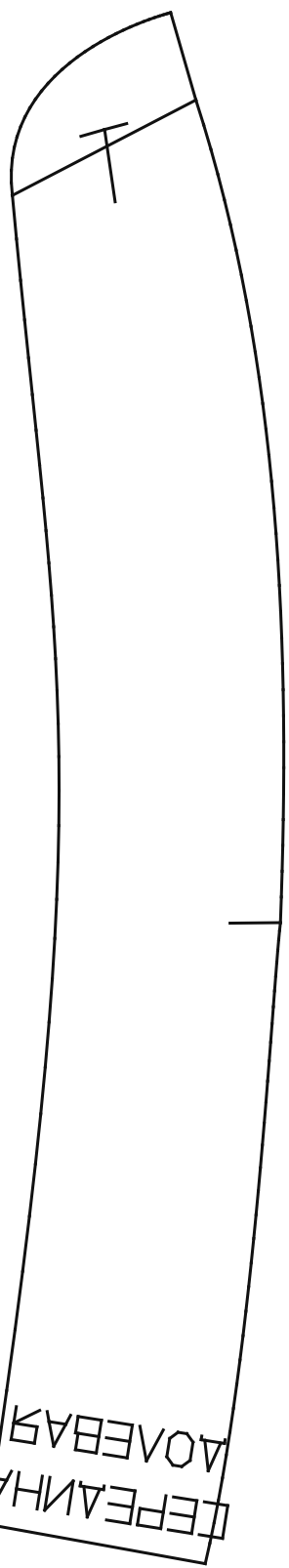
1:2



←
1:1

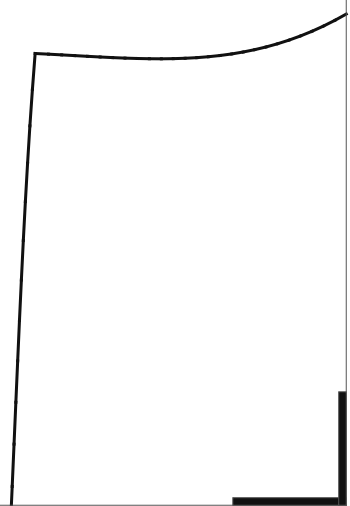


ЦЕПЕΛИHA
ΔOEBBAY

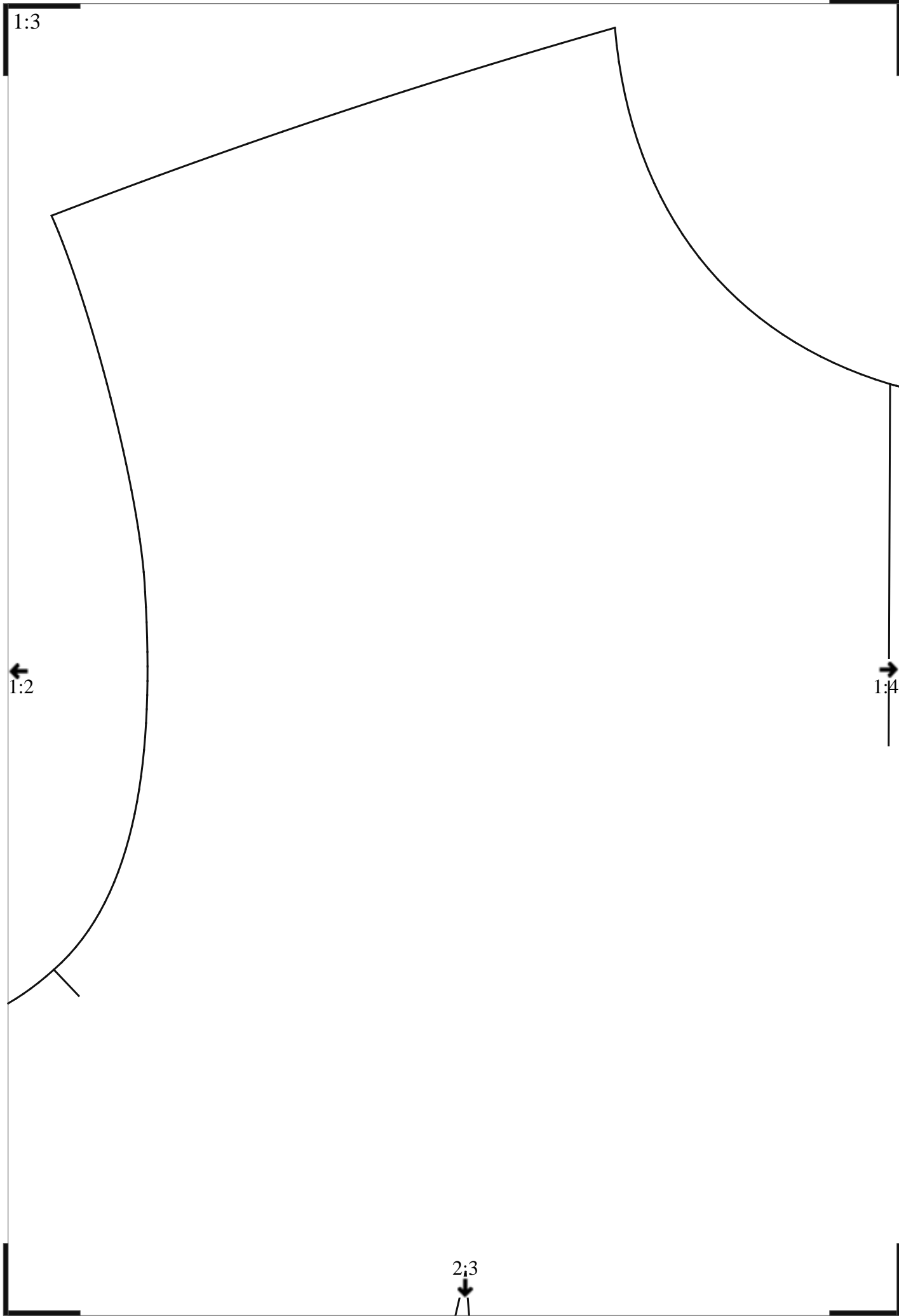


ЦЕПЕΔИHA
ΔOEBBAY

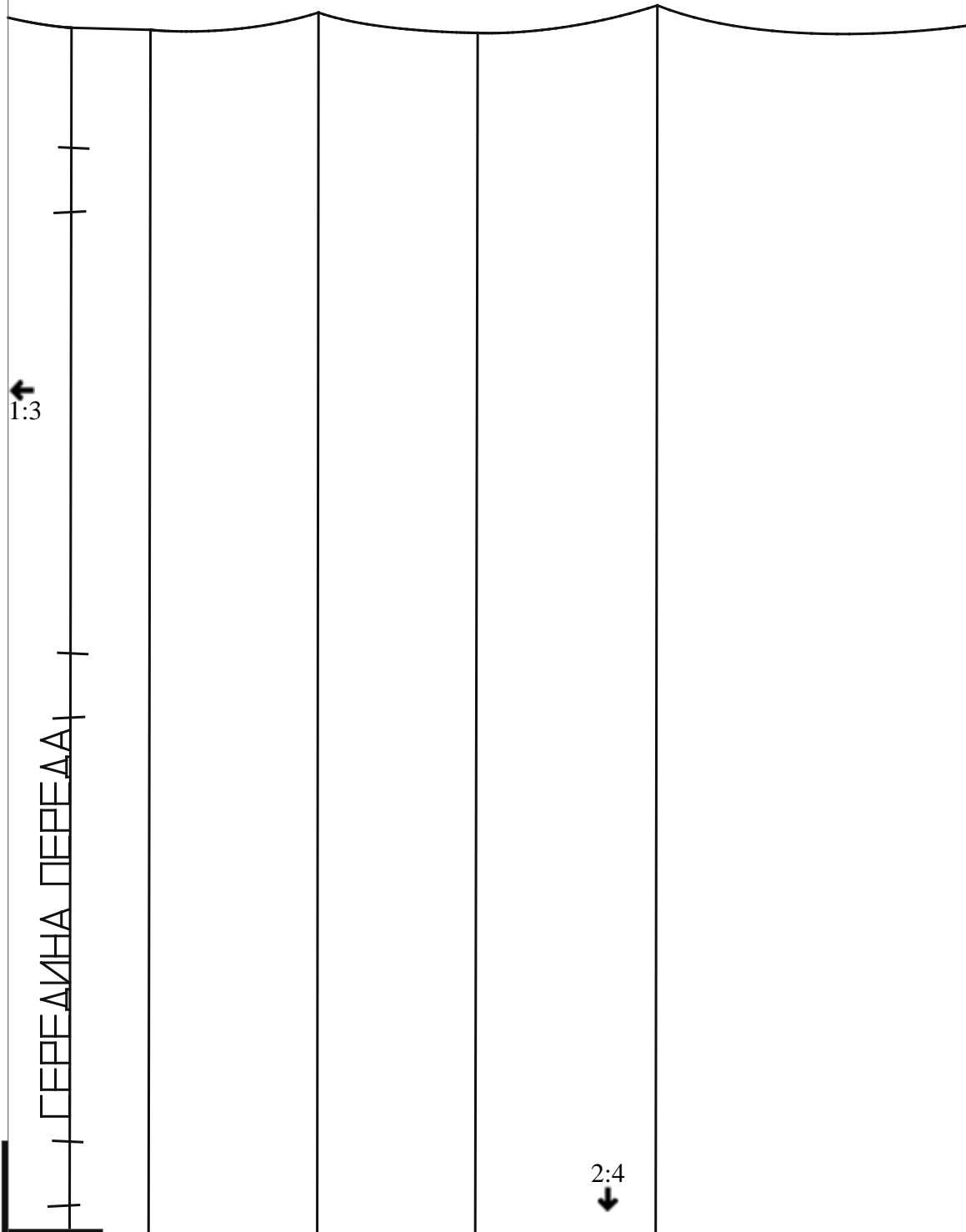
2:2
↓



→
1:3



1:4



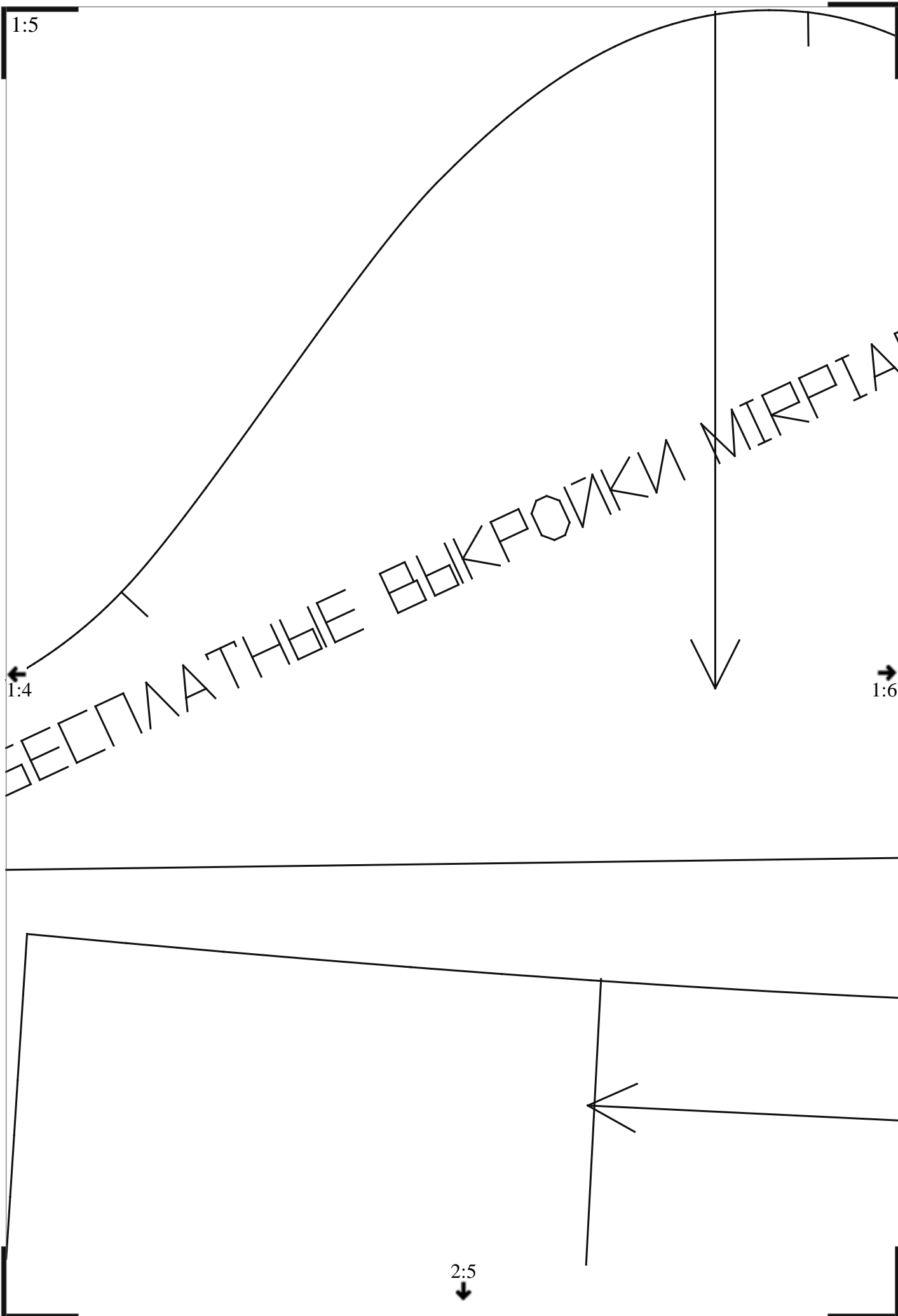
1:5

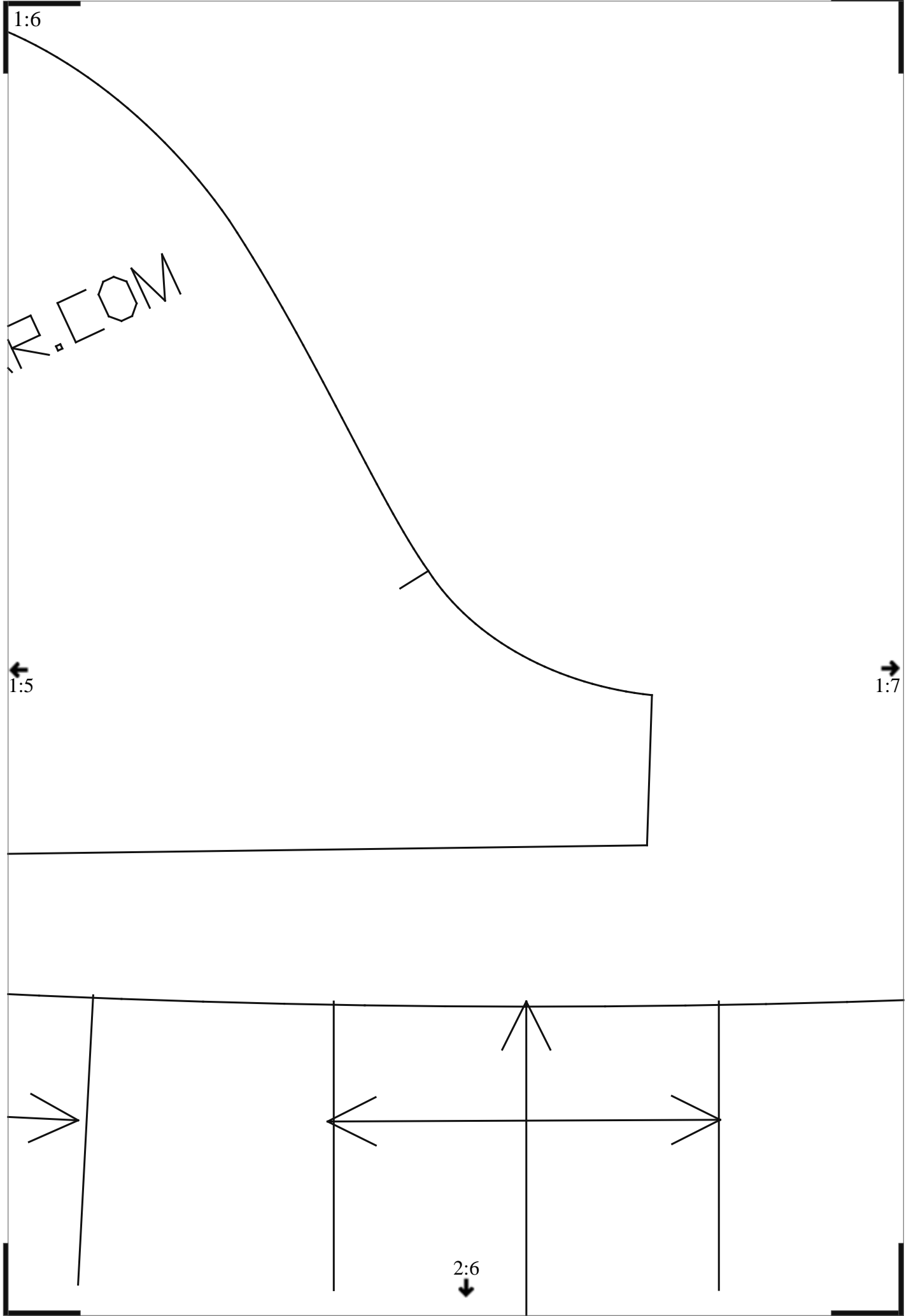
1:4

1:6

2:5

БЕСПЛАТНЫЕ ВЫКРОЙКИ MIRPIT

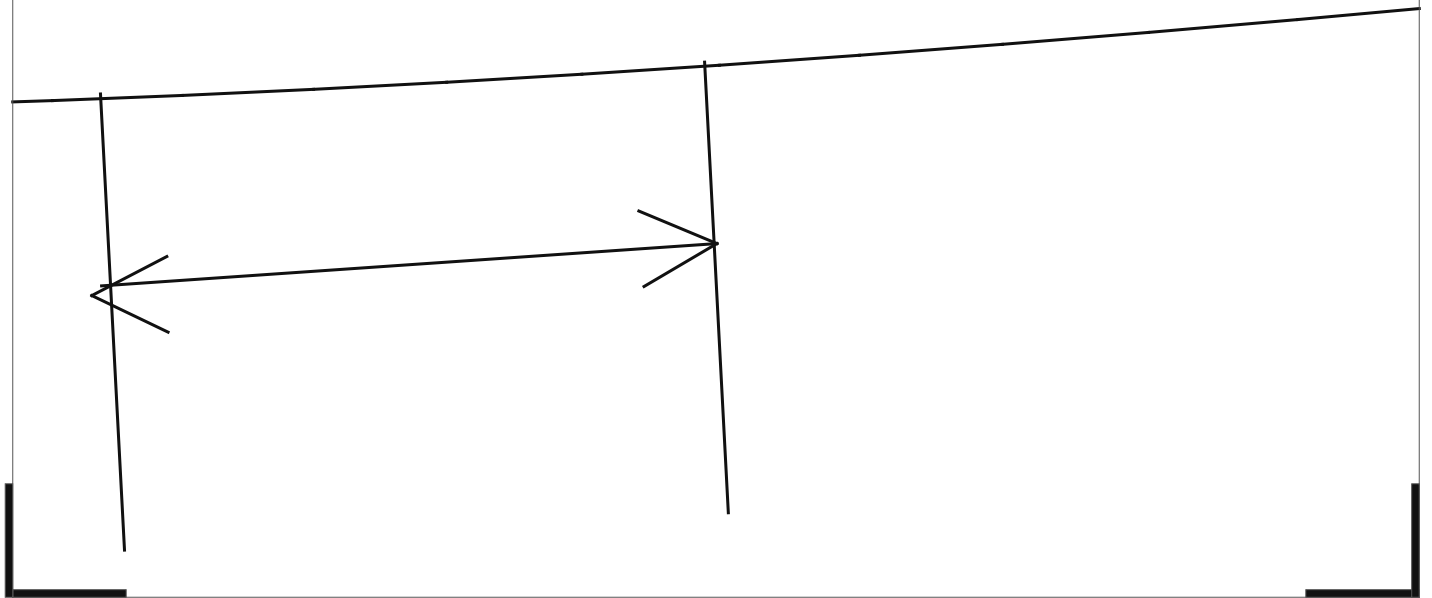




A hand-drawn diagram on a white background. A single line is drawn across the lower half of the page, sloping upwards from left to right. Two vertical lines are drawn perpendicular to the sloped line. On the left vertical line, an arrow points to the left, with the label '1:6' below it. On the right vertical line, an arrow points to the right, with the label '1:8' below it. The entire diagram is enclosed within a rectangular frame defined by thick black lines at the top, bottom, and sides.

A hand-drawn diagram on a white background. A single line is drawn across the lower half of the page, sloping upwards from left to right. On the left side of this line, there is a vertical line segment. An arrow points from the sloped line towards this vertical segment. Below the vertical segment, the label '1:6' is written. On the right side of the main sloped line, there is another vertical line segment. An arrow points from the sloped line towards this vertical segment. Below this vertical segment, the label '1:8' is written. The entire diagram is enclosed within a rectangular frame defined by thick black lines at the top, bottom, and sides.

A hand-drawn diagram on a white background. A single line is drawn across the lower half of the page, sloping upwards from left to right. On the left side of this line, there is a vertical line segment. An arrow points from the sloped line towards this vertical segment. Below the vertical segment, the label '1:6' is written. On the right side of the main sloped line, there is another vertical line segment. An arrow points from the sloped line towards this vertical segment. Below this vertical segment, the label '1:8' is written. The entire diagram is enclosed within a rectangular frame defined by thick black lines at the top, bottom, and sides.

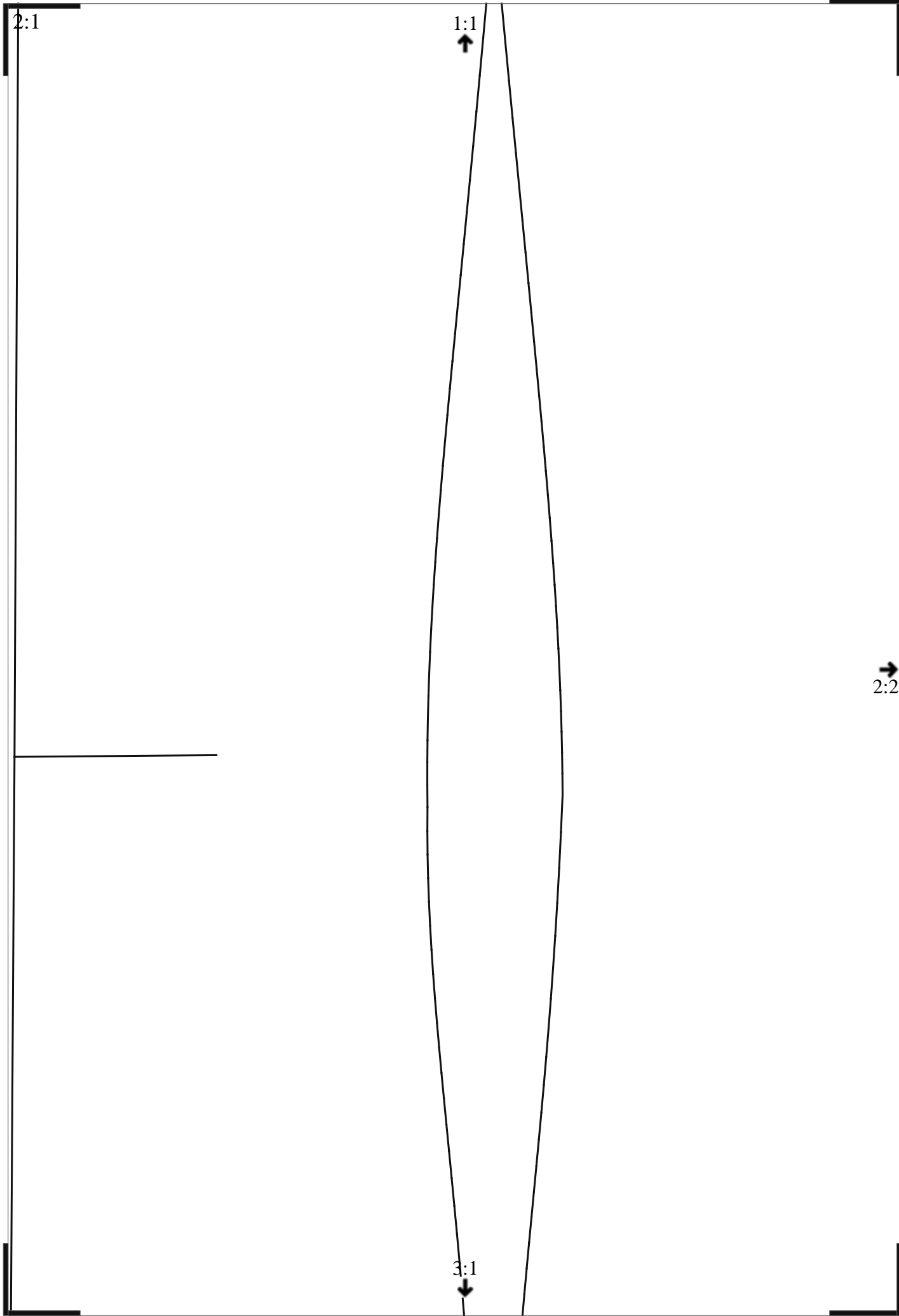


1:8



1:7

2:8
↓



2:2

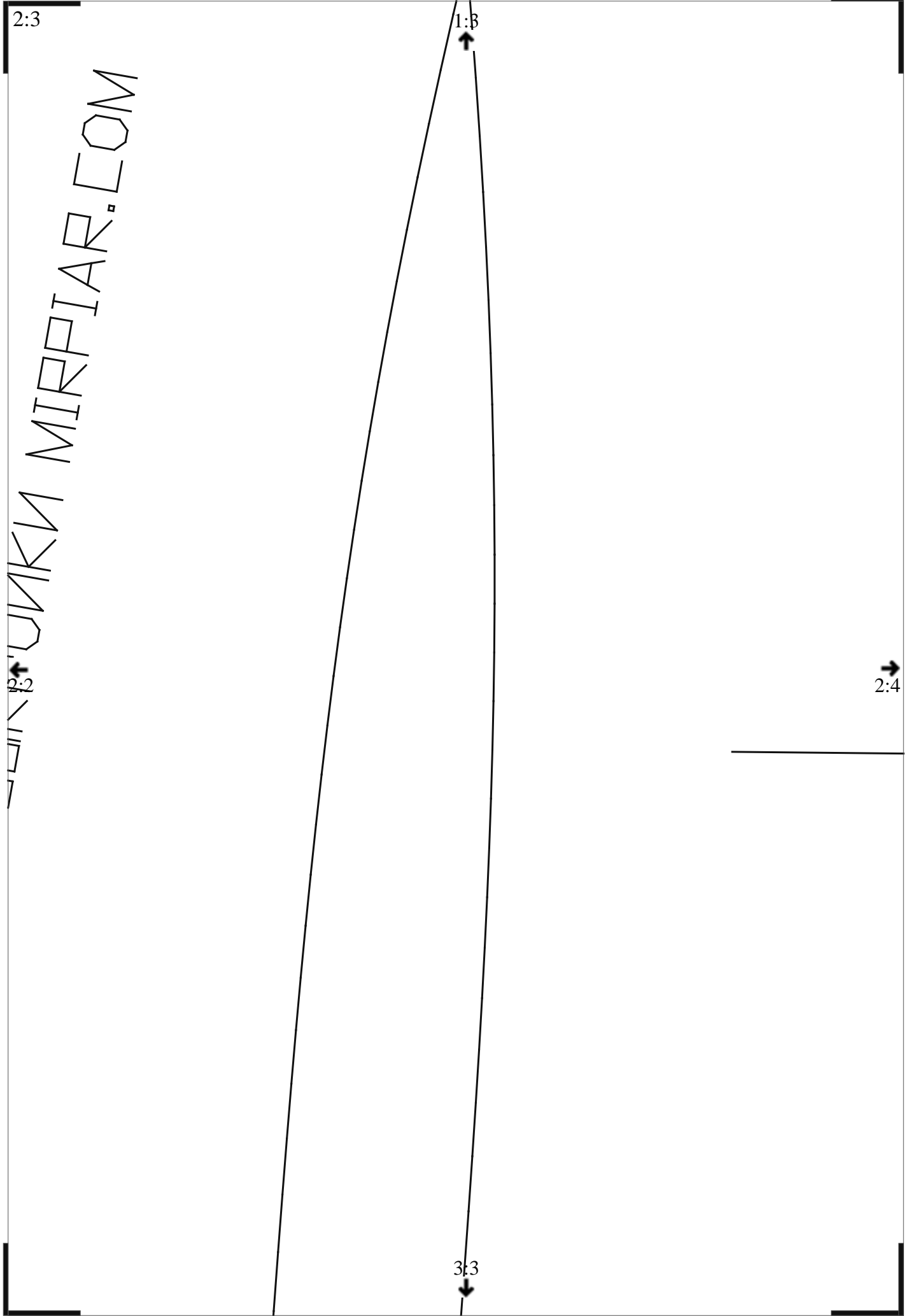
1:2

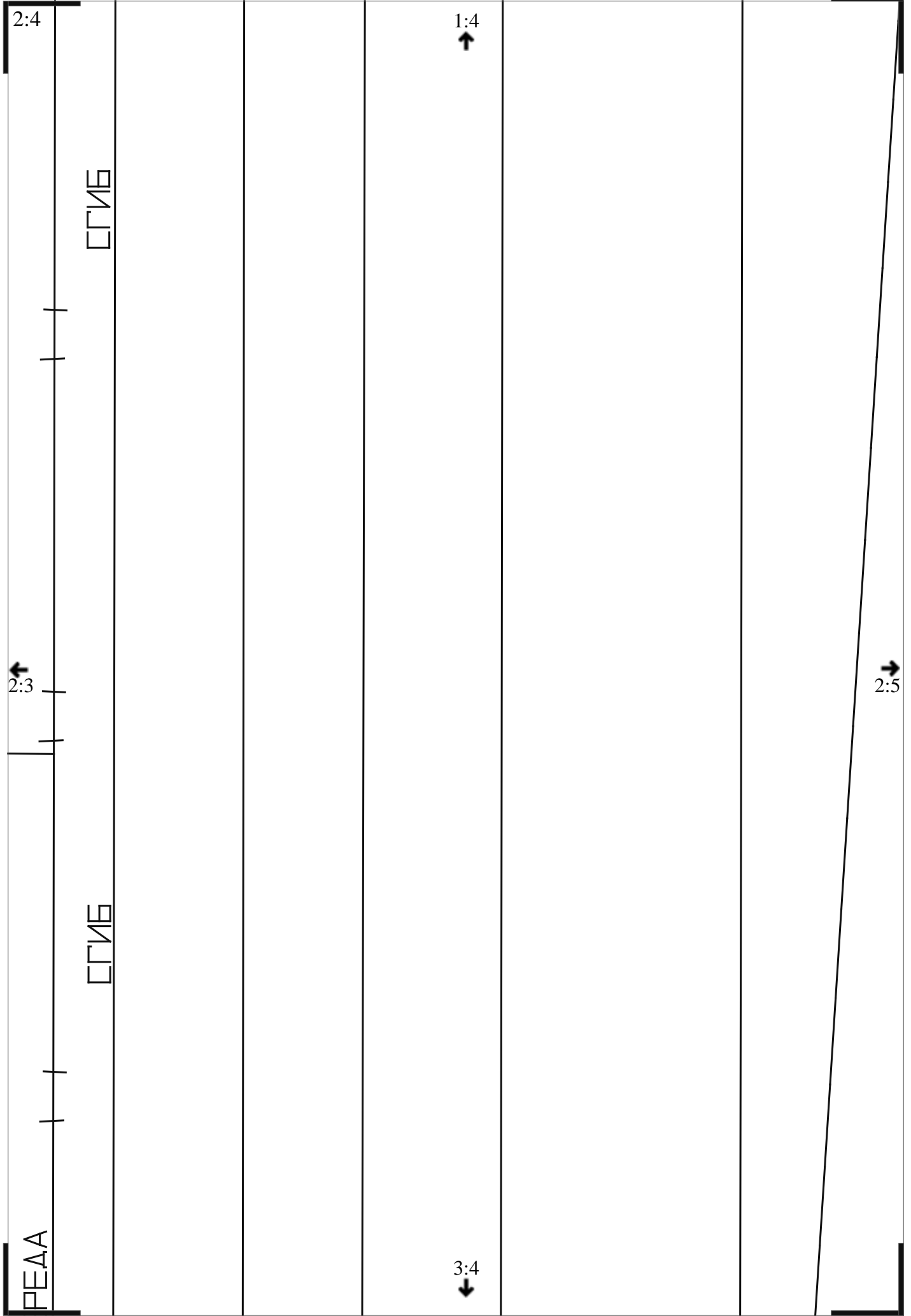
2:1

3:2

БЕСПЛАТНЫЕ ВХОДЫ

ПОДПИШКИ MIRPIAR.COM





PEAA

CIV6

CIV6

1:4
↑

3:4
↓

2:5
→

2:4

2:3
←

2:5

1:5



2:4



2:6



3:5



БЕЛМАТНБЕ ВЕКРОЙКИ МИРПИ

2:6

1:6



1AR.COM

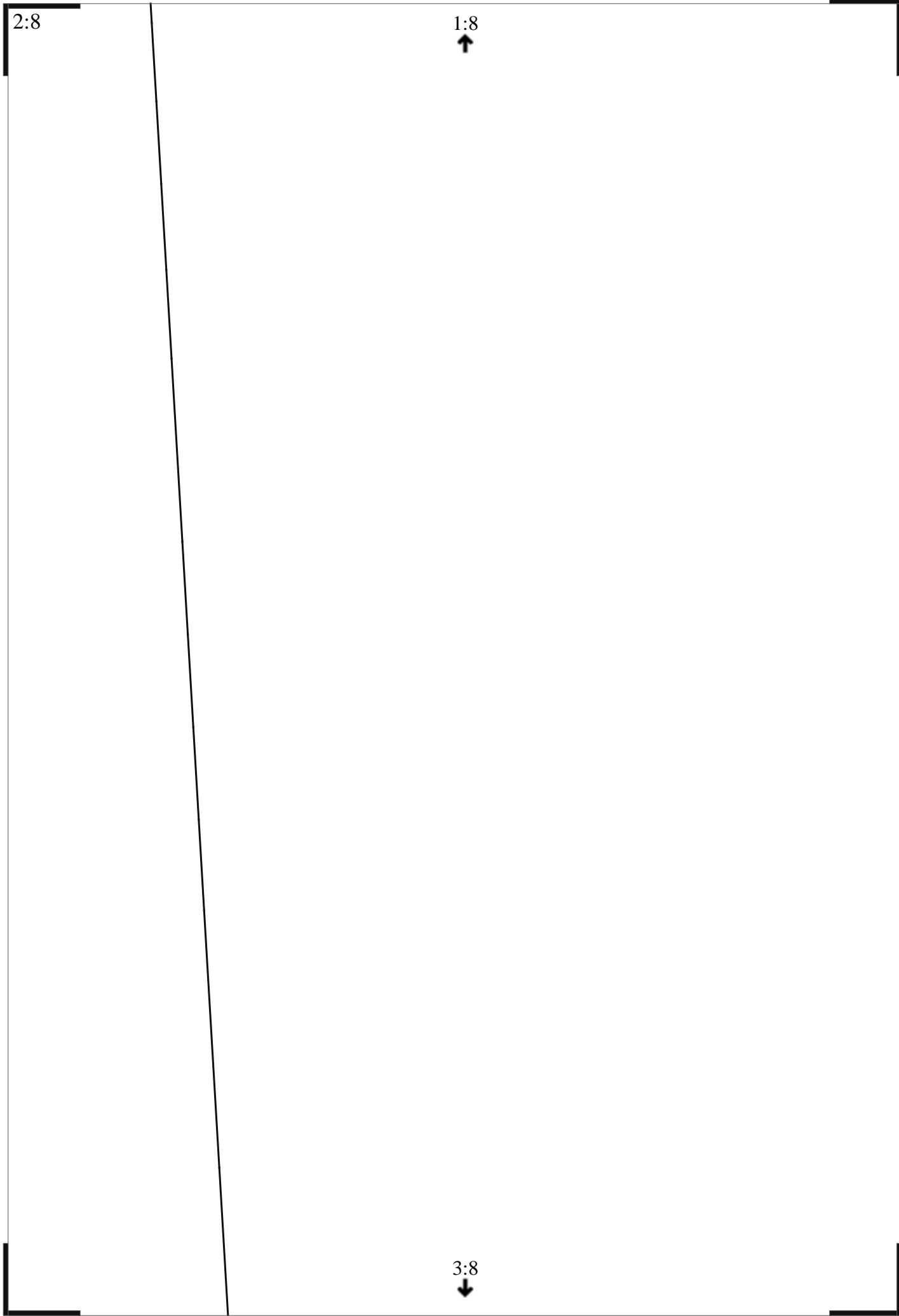
2:5



3:6



ΔΟΛΕΒΑ9



3:1

2:1

→
3:2

3:2

2:2

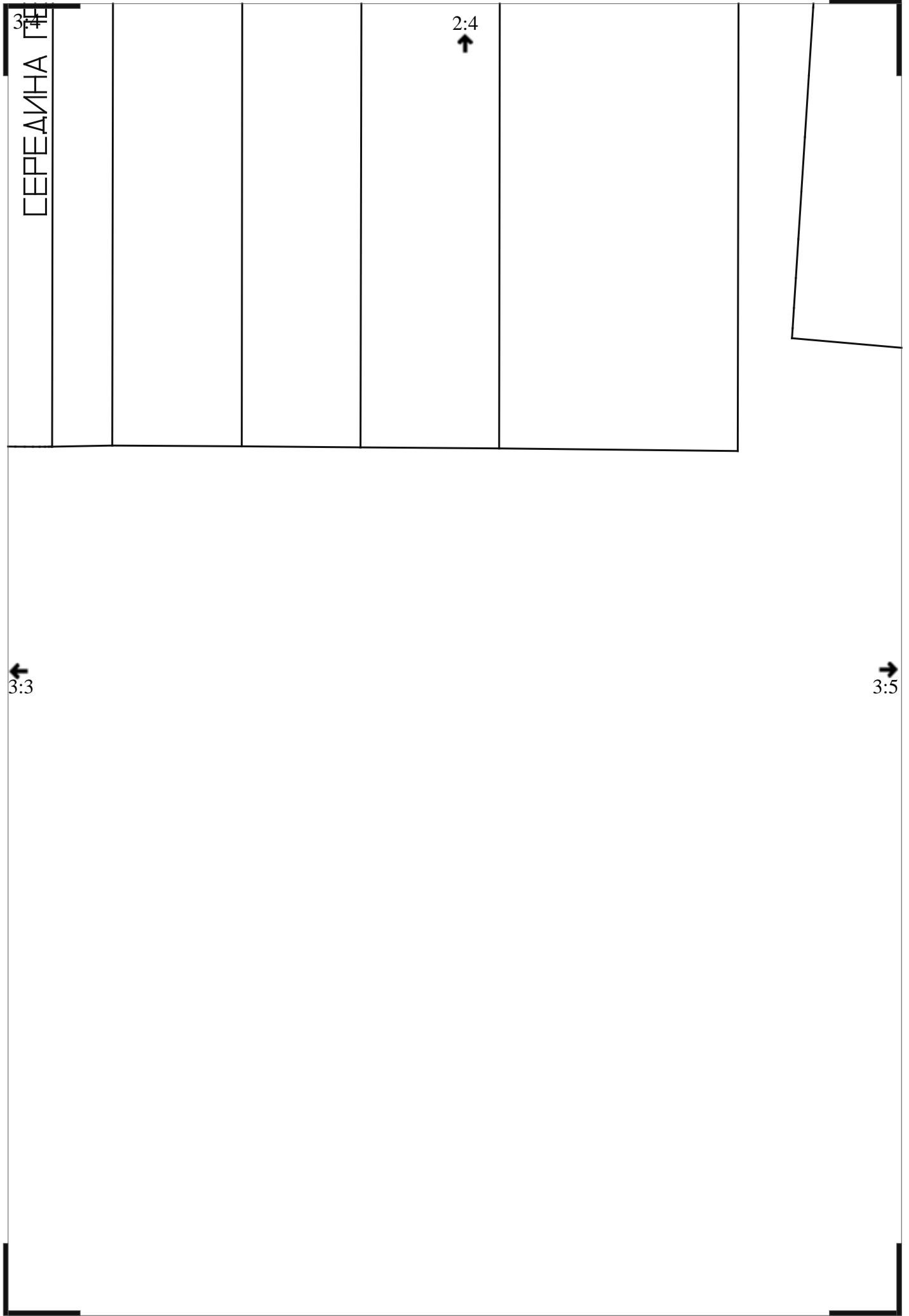


3:1



3:3





3:4
СЕРЕДИНА ПЕ

2:4
↑

←
3:3

→
3:5

3:5

2:5



3:4



3:6

3:6

2:6



3:5



3:7



3:7

←
3:6

→
3:8

3:8

2:8



3:7